

INTERACTIVE WHITEBOARD SYSTEM

ActivBoard 500 Pro combines the latest multi-touch interactive whiteboard technology with dynamic and intuitive Dual-User Pen and Touch capability. It is designed to deliver a new generation of applications and emerging multi-touch content standards. The ActivBoard 587 Pro incorporates integrated slim-line speakers and amplifier, ActivInspire 1.5 Professional Edition, Promethean ActivOffice and Promethean Applications software. The Mobile System is available for the ActivBoard 587 Pro, is easy to move from room to room, and includes an Extreme Short Throw Projector.

ACTIVBOARD GENERAL SPECIFICATIONS

Model	ActivBoard 500 Pro Range
Pen Internal Resolution	2730 points (lines) per inch
Pen Output Resolution	200 points (lines) per inch
Pen Tracking Rate	200 inches per second providing a fast response to pen commands
Pen Output Rate	160 coordinate pairs per second (single user) 80 coordinate pairs per second (dual user)
User Input	Cordless battery-free pen incorporating tip switch and side switch for full mouse functionality (ActivPen) and touch
Touch Resolution	18 points (lines) per inch
Touch Output Rate	80 coordinate pairs per second
Touch Response Rate	10 ms
Maximum Simultaneous Touches	2 with ActivInspire 1.5 Professional Edition 4 with Windows 7
Digitising Technology	Passive Electromagnetic and Capacitive sensing interface encased behind robust melamine for technical reliability and durability
Power Requirement	Mains Powered; 18V Power Supply Unit
Connection to Computer	1 x 3m USB data cable supplied
Connection to Peripherals	2 x USB ports on left hand side
Screen Surface	Low Glare Melamine
Certifications	UL, CE, FCC
Operating Temperature Range	0°C to +40°C (32°F to 104°F)
Storage Temperature Range	-20°C to +60°C (-4°F to 140°F)
Storage Humidity	10% to 90% (non-condensing)
Dual User Functionality	Pen: 1 Facilitator ActivPen and 1 Participant ActivPen can be used together in Dual-User Mode when using ActivInspire 1.5 Professional Edition Pen and Touch: 1 Participant ActivPen and simultaneous additional two-touch gesture supported when using ActivInspire 1.5 Professional Edition
Single User Functionality	Pen: 1 Facilitator ActivPen Touch: Two-touch gesture supported when using ActivInspire 1.5 Professional Edition



CONTINUED ON NEXT PAGE

ACTIVBOARD GENERAL SPECIFICATIONS (CONTINUED)

Integrated USB Sound	Two integrated slim-line speakers and amplifier (with controls, inputs and outputs)
Packed Contents List	ActivBoard 587 Pro, 2 Facilitator ActivPens, 2 Participant ActivPens, 1 AMP PSU, User Guide, Access to ActivInspire 1.5 Professional Edition, Promethean ActivOffice and Promethean Applications via download from Promethean Planet. (ActivInspire and Promethean ActivOffice are also available on DVD on request), 1 x 3m USB data cable

INTEGRATED USB SOUND SPECIFICATIONS

Amplifier Power Output	20W per channel RMS (<1% distortion)
Controls	Volume, Bass, Treble, on/off
Amplifier Frequency Response	40Hz to 18kHz +/-3dB (at 1W)
USB Sound	USB Sound supported for Minimum System Requirements stated
Connectivity – Inputs (4)	Stereo PC, Stereo CD/DVD, Mono Auxiliary, Microphone to PC via PC
Connectivity – Outputs (2)	2 Stereo
Power Requirement	18V 5 Amp

ACTIVBOARD SPECIFICATIONS

Model	ActivBoard 587 Pro
ActivBoard Size	87in
Resolution	14600 x 9200
Screen Formats	16:10
Overall Dimensions	2105mm x 1329mm (82.9in x 52.3in)
Active Area Dimensions	1865mm x 1175mm (73.4in x 46.3in)
Active Area Diagonal	2196mm (86.5in)
Actual Image Diagonal	2193mm (86.4in)
Board Weight	40kg (88lb)
Packed Weight	57kg (126lb)
Packed Dimensions	2270mm x 1500mm x 110mm (89.4in x 59.1in x 4.3in)

MOBILE STAND SPECIFICATIONS

Projector Model	EST-P1
Board Size	Accommodates ActivBoard 587 Pro
Height Settings	Height-adjustable mount, with 600mm (23.6in) of adjustment from 350mm (13.8in) to 950mm (37.4in) ± 50mm (1.9in). Top and bottom limit stops are fitted if the full range of movement is not required/appropriate. Height adjustment is powered by an electrical motor and is operated using a switch on the side of the stand.
Actuator Specification	<p>Input Voltage: 24VDC Max Load: 750N Static Load: more than 750N Speed: 30mm/s (no load), 20mm/s (750N) Stroke Length: 600 ± 2mm Retracted Length: 795 ± 2mm End Mounting Dimension: H Type, ø10.1 hole, 6.3mm Slot Limit Switch: Built-in Duty Cycle: S2-10min Temperature: -26°- 65°C IP Degree: IP54 AC-DC Adaptor: Input Voltage: 100 ~ 240VAC Output Voltage: 29VDC Current: 2Amp (4Amp protected) Cable and Plug: 1.5m, IEC Plug</p>
Projector Boom	Aluminium boom arm, extends 740mm (29.1in) from the back of the System. Projector Boom adjusts with the height of the ActivBoard reducing the need for specific re-calibration following height adjustment.
Mobile Base Dimensions	1400mm x 740mm (55.1in x 29.1in)
Room Height Requirements	Minimum 2562mm (100.9in) for full range operation
Door Size Requirements	Minimum door height clearance of 1962mm (77.2in) and door width clearance of 775mm (30.5in). Consideration should also be given to the size of corridors and layout of the school.
Minimum Turning Circle Requirement	See Technical Drawing Specifications at the end of this document.
Integrated Power Management	For ActivBoard, Mobile Stand and Projector. There will be one lead from the Mobile System to plug into a wall socket.
Frame Weight (approx.)	Frame only: 100kg (220.5lb); excl. board, projector, cabling and accessories
Complete System Weight (approx.)	ActivBoard 587 Pro including projector 151kg (332.5lb)
Connectivity Panel	Connectivity panel with inputs for 2 x fully wired VGA (to support VESA DDC) plus 3.5mm stereo jack audio inputs, USB-B input (for ActivBoard), S-Video, composite video plus auxiliary audio jack inputs, Cat 5e Ethernet input. Connectivity panel is mounted to the left hand-side of the Support Frame (when facing the system).
Cables	Cable assembly includes: 2 x 3.6m (11.8ft) VGA panel mount (fully wired to support VESA DDC), 3.6m (11.8ft) S-Video panel mount, 3.6m (11.8ft) composite video panel mount, 3.6m (11.8ft) Ethernet panel mount, 2.5m (8.2ft) USB patch cable (to connect computer to face plate), 2.3m (7.5ft) right angle stereo jack to panel mount jack socket, 2.3m (7.5ft) right angle stereo jack to panel mount phono pair, for PC audio input (to connect computer to face plate). 2m (6.6ft) VGA cable provided in the projector box (to connect the computer to the face plate).

CONTINUED ON NEXT PAGE

MOBILE STAND SPECIFICATIONS (CONTINUED)

Pack Weights & Dimensions

Box 1 of 4: 13kg (28.7lb)
Dimensions: 217mm x 1427mm x 467mm (8.54in x 56.18in x 18.39in)
Contents: Boom
Box 2 of 4: 28kg (61.7lb)
Dimensions: 182mm x 1652mm x 442mm (7.2in x 65in x 17.4in)
Contents: Spine
Box 3 of 4: 22kg (48.5lb)
Dimensions: 128mm x 1782mm x 822mm (5.04in x 70.16in x 32.36in)
Contents: Frame
Box 4 of 4: 42kg (92.6lb)
Dimensions: 202mm x 1442mm x 782mm (7.95in x 56.77in x 30.79in)
Contents: Mobile Base

PROJECTOR SPECIFICATIONS

Model	EST-P1 (DLP)
Native Resolution	WXGA (1280 x 800)
Compressed Resolution	up to 1080i
Typical Colours	16.77 million colours
Brightness (ANSI lumens)	2200 ANSI (normal), 2500 ANSI (high)
Contrast Ratio	2000:1
Noise Level	28dB (normal) 32dB (high brightness mode)
Dimensions (w x d x h)	354mm x 319mm x 157mm (13.9in x 12.6in x 6.1in) not including lens 354mm x 411mm x 219mm (13.9in x 16.1in x 8.6in) including lens
Weight	9kg (19.8lb)
Aspect Ratio	16:10 (native), 4:3, 16:9
Power Consumption	290W (<1W standby)
Device Type	DLP Technology
Focus	Manual Focus
Zoom	N/A
Focal Length	F=2.4
Projection Distance	0.39m ~ 0.56m (15in ~ 22in)
Projection Screen Size	1.98m ~2.79m (78in ~ 110in)
Lamp Type	220W lamp
Lamp Life	6000hrs (normal) 4000hrs (high)
Keystone Correction	Vertical: max ±15°

CONTINUED ON NEXT PAGE

PROJECTOR SPECIFICATIONS (CONTINUED)

Operating Temperature	5°C ~ 35°C (41°F ~ 95°F)
Power Supply Voltage	100 - 240V AC, 50/60Hz
Horizontal Scan Rate	15Hz ~ 90kHz
Vertical Scan Rate	43Hz ~ 85Hz
Computer Compatibility	IBM PC and Compatibles; Apple Macintosh, iMac, and VESA Standards WSXGA+ (1,680 x 1,050), WXGA+ (1,440 x 900), WXGA (1,280 x 800, 1,280 x 768), UXGA (1,600 x 1,200), SXGA+ (1,400 x 1,050), SXGA (1,280 x 1,024), XGA (1,024 x 768), SVGA (800 x 600), VGA (640 x 480)
Video Compatibility	NTSC (3.58/4.43), PAL (B/D/G/H/I/M/N), SECAM (B/D/G/K/K1/L), HDTV (720p, 1080i, 1035i), EDTV (480p, 575i), SDTV (480i, 576i)
Inputs	D-sub 15 (RGB) x 2 HDMI V1.3 x 1 S-Video x 1 Composite Video (RCA) x 1 USB control x 1 Networking LAN (RJ45) x 1 RS-232C (D-sub 9) x 1
Colour	Silver
Security	Kensington Lock, Security cable bar option, pin code security, remote control operated only
On-screen Menu	Arabic, Chinese (Simplified), Chinese (Traditional), Czech, Dutch, English, Finnish, French, German, Greek, Hungarian, Italian, Japanese, Korean, Norwegian, Polish, Portuguese, Russian, Spanish, Swedish, Thai, Turkish
Advanced Features	Filter-less 3D Ready Crestron RoomView Express Quick Lamp Access Direct power on/off Closed Caption
Packed Contents List	Power cord, computer cable (D-sub 15 – D-sub 15), wireless remote, owner's manual (CD-ROM & Quick Start Guide)

MINIMUM COMPUTER REQUIREMENTS

Operating Systems	Windows XP SP3 and above (XP/Vista/7); Mac OSX 10.4.11 – 10.6.4 (Tiger/Leopard/Snow Leopard); Linux Ubuntu 9.10 or 10.04; Debian Lenny; Linex Colegios 2010; Linkat 3; ALT_Linux (Russia)
PC	2.0 GHz Intel Core 2 Duo or faster for HD-quality videos, 1 GB of RAM is required to play HD-quality videos, 1024 x 768 resolution, 1.5 GB of Free Disk Space
Mac	2.0 GHz Intel Core 2 Duo, 512 MB of RAM, 1024 x 768 resolution, 3.0 GB of Free Disk Space
Linux	2.0 GHz Processor or faster for HD-quality videos, 1 GB of RAM is required to play HD-quality videos, 1024 x 768 resolution, 1.5 GB of Free Disk Space

INSTALLATION

ActivBoard 587 Pro Mobile System	The installation of this product should be completed by a Promethean Certified Installer. Please visit www.PrometheanWorld.com/ActivCare/installationtc . Components supplied and minimum specifications stated have been tested and are required for optimal performance. Use of components not supplied by Promethean or not meeting minimum specifications may impact performance and affect warranty. Contact your Promethean partner or visit www.Prometheankb.com for more information
-----------------------------------------	--------------------------------------------------------------------------------------------------------------------------------------------------------------------------------------------------------------------------------------------------------------------------------------------------------------------------------------------------------------------------------------------------------------------------------------------------------------------------------------------------------------------------------------------------------------------------------------------------------------

UPGRADE AND ACCESSORY OPTIONS

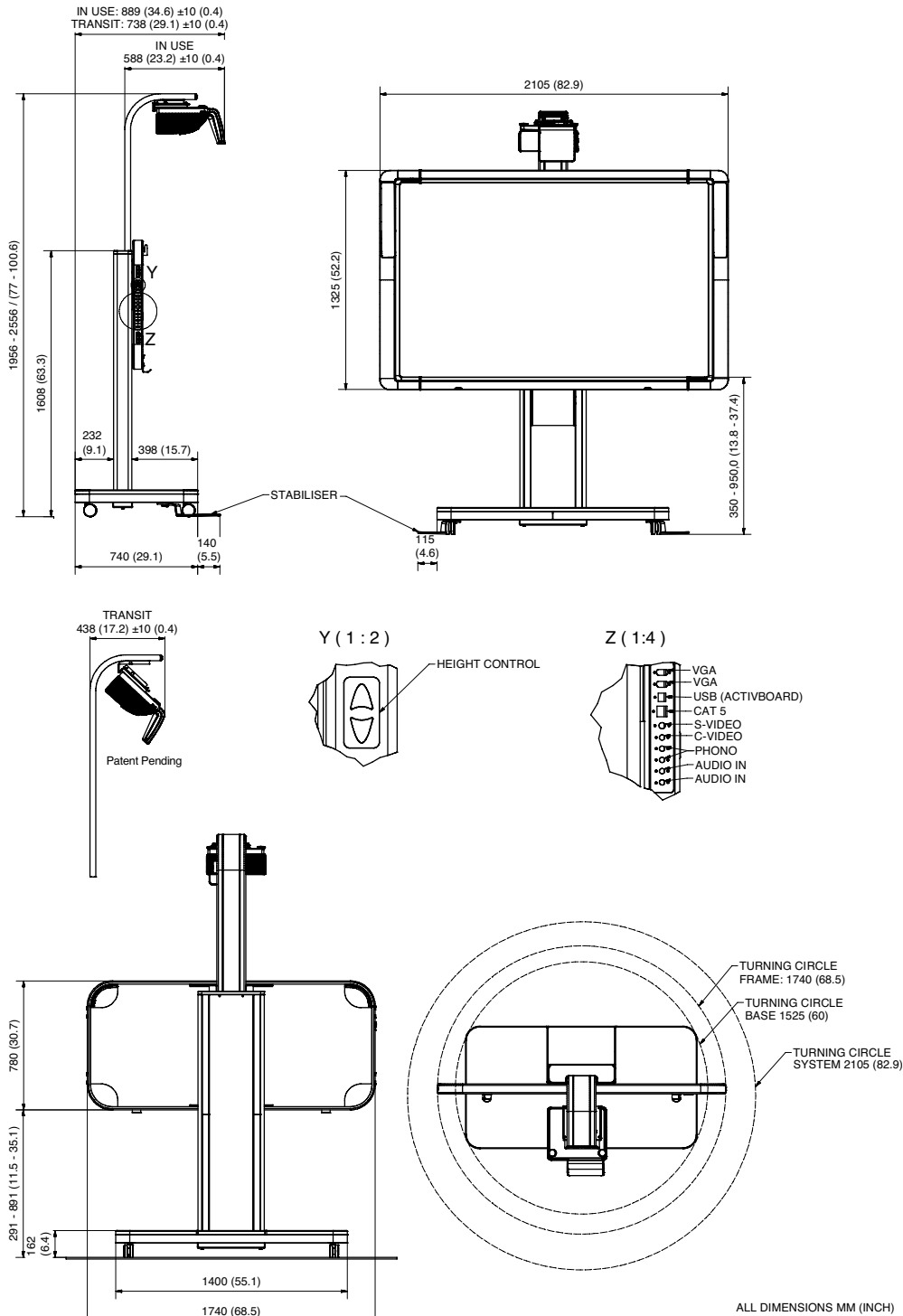
ActivWand 50	Wireless, battery-free and extended reach input device for the ActivBoard – 540mm (21.2in) in length; “left click”, cursor and hover, just like a mouse
Mobile Stand Drawer	Optional* drawer in the base of the System (includes lock and key), and can be used to store sets of ActiExpression, ActiVote, ActiSlate or the EST-P1 remote control. *Mobile Stand drawer is included with the Mobile System in EU Region.
Mobile Stand Dry Erase Whiteboard	Optional dry erase whiteboard, can use 1 or 2 dry erase whiteboards per System
Mobile Stand Laptop Shelf	Storage for 1 laptop, with a maximum size of a standard 43cm (17in) laptop

WARRANTY AND SUPPORT[†]

Warranty	For Promethean Warranty Information please visit: www.PrometheanWorld.com/ActivCare
Support	Online support for all Promethean Products available from: www.Prometheankb.com

INTERACTIVE WHITEBOARD SYSTEM

TECHNICAL DRAWING SPECIFICATIONS



Promethean recommends the use of the Stabilisers when in use.